

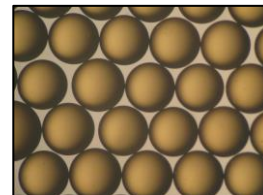


AMBERLITE™ HPR1200 H Ion Exchange Resin

Uniform Particle Size, Gel, Strong Acid Cation Exchange Resin for Industrial Demineralization Applications

Description

AMBERLITE™ HPR1200 H Ion Exchange Resin is the go-to, high-quality resin for use in industrial demineralization applications when high performance and cost-effective operation is required. The chemical properties and particle size of the resin have been optimized to help yield excellent operating capacity and rinse characteristics, while reducing chemical regenerant and rinse water usage.



AMBERLITE HPR1200 H is compatible with all system technologies; it has the flexibility to be used in both the lead cation bed and in mixed bed polishers, allowing users to inventory only one strong acid cation resin for their demineralization needs. In mixed bed applications, the dark color of this cation resin is designed to allow easy visual distinction from the light-colored anion resin following backwash separation.

AMBERLITE™ HPR1200 Na Ion Exchange Resin is available for industrial softening or demineralization applications when the sodium-form is preferred by the user.

Resin Pairings

Recommended pairing:

- AMBERLITE™ HPR4200 OH Ion Exchange Resin (gel)
- AMBERLITE™ HPR4800 OH Ion Exchange Resin (gel)

Additional pairing:

- AMBERLITE™ HPR4200 Cl Ion Exchange Resin (gel)
- AMBERLITE™ HPR4800 Cl Ion Exchange Resin (gel)
- AMBERLITE™ HPR4700 OH or Cl Ion Exchange Resin (gel)

Applications

- Demineralization
- Mixed bed polishing

System Designs

Compatible with all system technologies:

- Co-current
- Counter-current / Hold-down
- Packed beds
- Mixed beds

Historical Reference

AMBERLITE™ HPR1200 H Ion Exchange Resin has previously been sold as DOWEX MARATHON™ 1200 H Ion Exchange Resin.

Typical Physical and Chemical Properties**

Physical Properties	
Copolymer	Styrene-divinylbenzene
Matrix	Gel
Type	Strong acid cation
Functional Group	Sulfonic acid
Physical Form	Dark brown, translucent, spherical beads
Chemical Properties	
Ionic Form as Shipped	H ⁺
Total Exchange Capacity	≥ 1.8 eq/L (H ⁺ form)
Water Retention Capacity	50.0 – 56.0% (H ⁺ form)
Particle Size	
Particle Diameter §	600 ± 50 µm
Uniformity Coefficient	≤ 1.10
< 300 µm	≤ 0.1%
> 850 µm	≤ 3.0%
Stability	
Whole Uncracked Beads	≥ 95%
Swelling	Na ⁺ → H ⁺ : 8%
Density	
Particle Density	1.20 g/mL
Shipping Weight	785 g/L

§ For additional particle size information, please refer to the [Particle Size Distribution Cross Reference Chart](#) (Form No. 177-01775).

Suggested Operating Conditions**

Temperature Range (H ⁺ form)	5 – 120°C (41 – 248°F)
pH Range	
Service Cycle	1 – 14
Stable	0 – 14

For additional information regarding recommended minimum bed depth, operating conditions, and regeneration conditions for [mixed beds](#) (Form No. 177-03705) or [separate beds](#) (Form No. 177-03729) in water treatment, please refer to our Tech Facts.

Hydraulic Characteristics

Estimated bed expansion of AMBERLITE™ HPR1200 H Ion Exchange Resin as a function of backwash flowrate and temperature is shown in Figure 1.

Estimated pressure drop for AMBERLITE HPR1200 H as a function of service flowrate and temperature is shown in Figure 2. These pressure drop expectations are valid at the start of the service run with clean water.

Figure 1: Backwash Expansion

Temperature = 10 – 60°C (50 – 140°F)

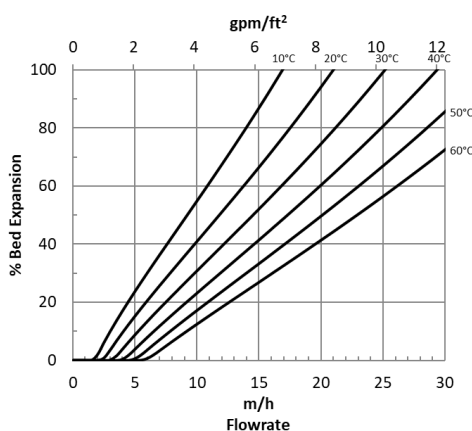
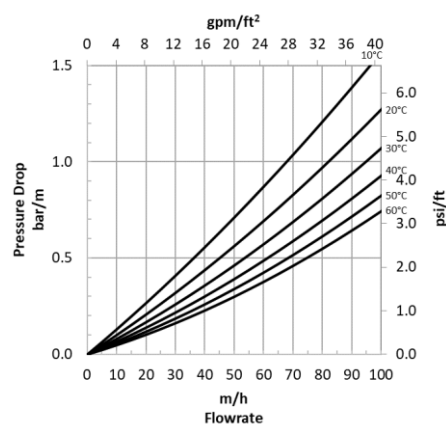


Figure 2: Pressure Drop

Temperature = 10 – 60°C (50 – 140°F)



Product Stewardship

Dow has a fundamental concern for all who make, distribute, and use its products, and for the environment in which we live. This concern is the basis for our product stewardship philosophy by which we assess the safety, health, and environmental information on our products and then take appropriate steps to protect employee and public health and our environment. The success of our product stewardship program rests with each and every individual involved with Dow products—from the initial concept and research, to manufacture, use, sale, disposal, and recycle of each product.

Customer Notice

Dow strongly encourages its customers to review both their manufacturing processes and their applications of Dow products from the standpoint of human health and environmental quality to ensure that Dow products are not used in ways for which they are not intended or tested. Dow personnel are available to answer your questions and to provide reasonable technical support. Dow product literature, including safety data sheets, should be consulted prior to use of Dow products. Current safety data sheets are available from Dow.

For more information, contact our Customer Information Group:

Asia Pacific	+86 21 3851 4988
Europe, Middle East, Africa	+31 115 672626
Latin America	+55 11 5184 8722
North America	1-800-447-4369

www.dowwaterandprocess.com

WARNING: Oxidizing agents such as nitric acid attack organic ion exchange resins under certain conditions. This could lead to anything from slight resin degradation to a violent exothermic reaction (explosion). Before using strong oxidizing agents, consult sources knowledgeable in handling such materials.

NOTICE: No freedom from infringement of any patent owned by Dow or others is to be inferred. Because use conditions and applicable laws may differ from one location to another and may change with time, Customer is responsible for determining whether products and the information in this document are appropriate for Customer's use and for ensuring that Customer's workplace and disposal practices are in compliance with applicable laws and other government enactments. The product shown in this literature may not be available for sale and/or available in all geographies where Dow is represented. The claims made may not have been approved for use in all countries. Dow assumes no obligation or liability for the information in this document. References to "Dow" or the "Company" mean the Dow legal entity selling the products to Customer unless otherwise expressly noted. NO WARRANTIES ARE GIVEN; ALL IMPLIED WARRANTIES OF MERCHANTABILITY OR FITNESS FOR A PARTICULAR PURPOSE ARE EXPRESSLY EXCLUDED.

"All information set forth herein is for informational purposes only. This information is general information and may differ from that based on actual conditions. Please note that physical properties may vary depending on certain conditions and while operating conditions stated in this document are intended to lengthen product lifespan and/or improve product performance, it will ultimately depend on actual circumstances and is in no event a guarantee of achieving any specific results. Nothing in this document should be treated as a warranty by Dow.

