



**eVOQUA**  
WATER TECHNOLOGIES



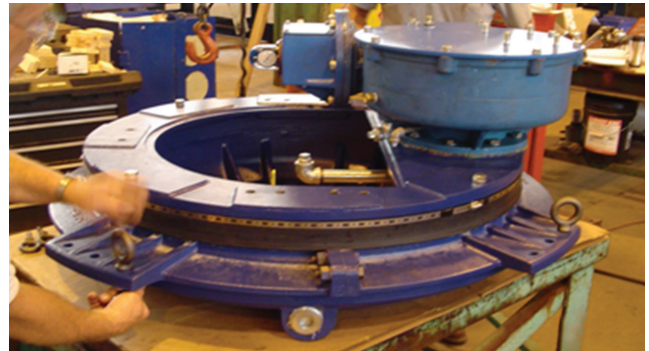
Evoqua provides leading clarifier services for Envirex® and other brands

## **ENVIREX® CIRCULAR CLARIFIER DRIVE REBUILD/RETROFIT SERVICES**

### **Improve performance and functional value**

Evoqua offers a clarifier drive retrofit/factory rebuild program designed to maintain your clarifier's operation at peak performance and for long-term productivity – for both our own Envirex® drives as well as other manufacturer's units. Our program includes on-site inspection by an Evoqua trained field engineer to assess the condition of your clarifier drive, observe current operation and provide a detailed inspection report and recommended next steps.

For existing customers with Envirex drives, Evoqua can rebuild/retrofit the existing unit or upgrade it – you choose the option that works best for your plant and operating budget. For customers with other manufacturer's drives, we can upgrade your unit by replacing it with the proven Envirex drive technology. Evoqua provides onsite field support to implement the recommended improvement, using our installation team or yours.



Better Than New clarifier drive factory rebuild program with one-year warranty.

### **Benefits of Evoqua Drive Rebuild/Retrofit Program**

- All drive units are designed in excess of a 20 year working life.
- Our experienced field personnel provide inspection services to help manage your budget constraints.
- Rebuild services can be performed in shop or on-site to reduce system downtime.
- Maintain the productivity and performance of your drive with minimum expenditure.



Onsite inspection services available from Evoqua trained and experienced technicians.

#### Program features include:

- On-site inspection by an Evoqua trained and experienced technician
- Detailed service report indicating the results of our inspection and recommendation
- Drive rebuild services performed in the field by Evoqua technicians or your own site personnel
- Replacement drives available for installation by Evoqua or your own site personnel
- Replacement drives in stock for immediate delivery
- Replacement drives are rugged construction, designed for +20 years of working life and feature peripheral condensate sumps with oversized 1-1/2" dia. oil drain piping
- Replacement and factory rebuilt drives include a one (1) year warranty
- Credit available for return of any existing Envirex H30, H40 and H60 units (inspection required)
- Factory rebuilt units also available

#### Existing Envirex Drive Customers – Complete Rebuild and Retrofit Kits

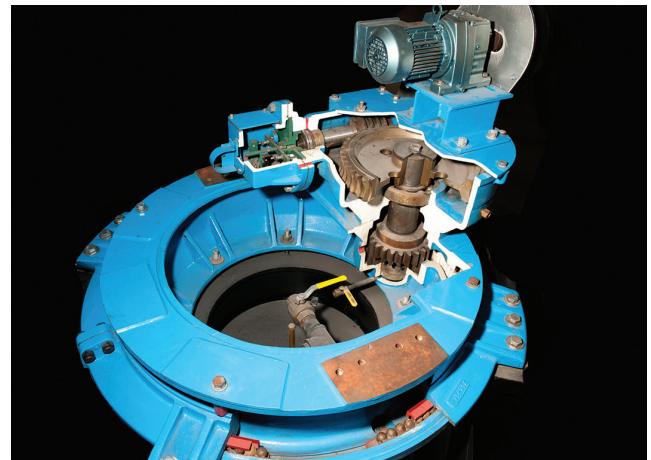
- Envirex main split gear allows easy rebuild in the field without cranes or heavy machinery
- Short lead time and quick delivery on all parts

#### Existing Envirex Drive or Other Manufacturer's Drive Customers – Upgrade and Replacement Drives

- Envirex replacement drives are available for other manufacturer's drives
- Engineering support services required to adapt new Envirex drive
- Adapter plates provided (for competitor units) for quick and trouble-free drive replacement
- Field support available to assist with drive installation or supervise your site personnel

#### Optional Drive Services Available

- Digital torque overload system with LED readout
- Auto condensate drain system
- Heat trace for oil drain piping



Circular Clarifier Drive rebuilds available for H30, H40 and H60 units.



2607 N Grandview Blvd, Suite 130, Waukesha, WI 53188

+1 (800) 524-6324 (toll-free) +1 (262) 547-0141 (toll) [www.evoqua.com/aftermarket](http://www.evoqua.com/aftermarket)

**Envirex**<sup>®</sup>  
an EVOQUA brand

Envirex is a registered trademark of Evoqua, its subsidiaries or affiliates, in some countries.

All information presented herein is believed reliable and in accordance with accepted engineering practices. Evoqua makes no warranties as to the completeness of this information. Users are responsible for evaluating individual product suitability for specific applications. Evoqua assumes no liability whatsoever for any special, indirect or consequential damages arising from the sale, resale or misuse of its products.

© 2016 Evoqua Water Technologies LLC Subject to change without notice MU-CL-DRIVE-RETRO-DS-0316